



# The Bhagirathi Cooperative Milk Producers' Union Limited

(A Govt. of West Bengal Project)

## NOTICE INVITING e-TENDER

BU/MDO/RIDF/XXIX/(2023-24)/ 2502

Dated:14/12/2023

The Bhagirathi Cooperative Milk Producers' Union Limited invites E-tender in two bid system from reputed contractors having experience in execution of civil works for Construction of Truss Factory with R.C.C foundation at the Feeder Dairy campus of The Bhagirathi Milk Union Berhampore, Murshidabad., Pin-742101

### IMPORTANT DATE AND TIME SCHEDULE

Sl. No.	Particulars	Date & Time
1	Date of uploading NIT Online	14.12.2023 at 1700 hrs
2	Documents download start date (Online)	14.12.2023 at 1705 hrs
3	Technical Bid proposal submission start date (Online)	14.12.2023 at 1710hrs
4	Bid Submission end date (Online)	29.12.2023 at 1700 hrs
5	Technical bid opening date	31.12.2023 at 1700 hrs
6	Pre bid Meeting	NIL
7	Financial Bid Opening date	To be notified later

### The details of work are given below:

<b>Nature of Work</b>	<b>Civil works for Construction of Truss Factory with R.C.C foundation at Bhagirathi milk union campus(Feeder Dairy) Berhampore , Murshidabad., Pin-742101</b>
<b>Scope of Work</b>	<b>As per (Annexure – A)</b>
<b>Estimated Cost of Work</b>	<b>Rs. 57,28,137.00/-</b>
<b>Bid Inviting Authority</b>	The Managing Director of The Bhagirathi Cooperative Milk Producers' Union Limited
<b>Earnest Money Deposit (EMD)</b>	<p><b>The EMD amounting to Rs. 1,14,563.00/- which is 2% of the Estimated Cost of Work should be deposited online through Net Banking, NEFT/RTGS in favor of The Bhagirathi Cooperative Milk Producers' Union Limited payable at Berhampore. EMD shall not carry interest.</b></p> <p>Tender will select the Tender to bid and initiate payment of pre-defined EMD for that tender by selecting from either of the following payments modes (vide Finance Department Memorandum no. 3975-F(Y) Dt. 28/07/2016) :</p> <ol style="list-style-type: none"><li>1. Net banking (any of the banks listed in the ICICI Bank Payment gateway) in case of payment through ICICI Bank Payment Gateway.</li><li>2. RTGS/NEFT in case of offline payment through bank accounts in any Bank.</li></ol> <p><b>Payment procedure.</b></p>

**a) Payment by Net Banking (any listed bank) through ICICI Bank Payment Gateway :**

1. On selection of net banking as the payment mode, the bidder will be directed to ICICI Bank Payment Gateway webpage (along with a string containing a Unique ID) where he will select the Bank through which he wants to do the transaction.

2. Bidder will make the payment after entering his Unique ID and password of the bank to process the transaction.

3. Bidder will receive a confirmation message regarding success/failure of the transaction.

1. If the transaction is successful, the amount paid by the bidder will get credited in the respective Pooling account of The Bhagirathi Cooperative Milk Producers' Union Limited maintained with the Focal Point Branch of ICICI Bank at R.N. Mukherjee Road, Kolkata for collection of EMD/Tender Fees.

2. For transaction failure, the bidder will again try for payment by going back to the first step.

**b) Payment through RTGS/NEFT:**

1. On selection of RTGS/NEFT as the payment mode, the e-Procurement portal will show a pre-filled challan having the details to process RTGS/NEFT transaction.

2. The bidder will print the challan and use the pre-filled information to make RTGS/NEFT payment using his Bank account.

3. Once payment is made, the bidder Will come back to the e-Procurement portal after expiry of are asonable time to enable the NEFT/RTGS process to complete, in order to verify the payment made and continue the bidding process.

4. If verification is successful, the fund will get credited to the respective Pooling account of The Bhagirathi Cooperative Milk Producers' Union Limited maintained with the Focal Point Branch of ICICI Bank at R.N. Mukherjee Road for collection of EMD/Tender Fees.

5. Hereafter, the bidder will go to e-Procurement portal for submission of his bid.

6. But if the payment verification is unsuccessful, the amount will be returned to the bidder's account.

**B. Refund/Settlement Process:**

i. After opening of the bids and technical evaluation of the same by the Quotation inviting authority through electronic processing in the e-Procurement portal of the State Government, the Quotation inviting authority will declare the status of the bids as successful or unsuccessful which will bemade available, along with the details of the unsuccessful bidders, to ICICI Bank by the e-Procurement portal through web services.

ii. On receipt of the information from the e-Procurement portal, the Bank will refund, through an automated process, the EMD of the bidders disqualified at the technical evaluation to the respective bidders' bank accounts from which they made the payment transaction. Such refund will take place within T+2 Bank Working Days where T will mean the date on which information on rejection of bid is uploaded to the e-Procurement portal by the Tender inviting authority.

iii. Once the financial bid evaluation is electronically processed in the e-Procurement portal, EMD of the technically qualified bidders other than that of the L1 and L2 bidders will be refunded, through an automated process, to the respective bidders' bank accounts from which they made the payment transaction. Such refund will take place within T+2 Bank Working Days where T will mean the date on which information on rejection of financial bid is uploaded to the e-Procurement portal by the Quotation inviting authority. However, the L2 bidder should not be rejected till the LOI process is successful.

iv. If the L1 bidder accepts the LOI and the same is processed electronically in the e-Procurement portal, EMD of the L2 bidder will be refunded through an automated process, to his bank account from which he made the payment transaction. Such refund will take place within T+2 Bank Working Days where T will mean the date on which information on Award of Contract (AOC) to the L1 bidder is uploaded to the e-Procurement portal by the tender inviting authority.

v. As soon as the L1 bidder is awarded the contract (AOC) and the same is processed electronically in the e-Procurement portal –

a) EMD of the L1 bidder for tenders of State Government offices will automatically get transferred from the pooling account to the State Government deposit head “8443-00-103-001-07” through GRIPS along with the bank particulars of the L1 bidder.

b) EMD of the L1 bidder for tenders of the State PSUs/Autonomous Bodies/Local Bodies/PRI, etc will automatically get transferred from the pooling account to their respective linked bank accounts along with the bank particulars of the L1 bidder. In both the above cases, such transfer will take place within T+1 Bank Working Days where T will mean the date on which the Award of Contract (AOC) is issued.

vi. The Bank will share the details of the GRN No. generated on successful entry in GRIPS with the E-Procurement portal for updation.

vii. Once the EMD of the L1 bidder is transferred in the manner mentioned above, Tender fees, if any, deposited by the bidders will be transferred electronically from the pooling account to the Government revenue receipt head “0070-60-800-013-27” through GRIPS for Government tenders and to the respective linked bank accounts for State PSU/Autonomous Body/Local Body/PRI, etc tenders.

viii. All refunds will be made mandatorily to the Bank A/c from which the payment of EMD & Tender Fees (if any) were initiated

**Bid Document**

The bid document is available in the E-Tendering Portal of Govt. of West Bengal <https://wbtenders.gov.in> .

<b>Statutory &amp; Non Statutory Documents (Technical Bid)</b>	<ol style="list-style-type: none"> <li>1. GST Registration Certificate</li> <li>2. KYC (AADHAR/VOTER CARD/DRIVING LICENSE/PASSPORT)</li> <li>3. IT Return of last three years,</li> <li>4. Pan Card, Trade License</li> <li>5. Credentials of execution of civil works at any Govt. / autonomous/private organization worth Rs. 25 lakhs &amp; above. (<i>Truss credential are preferable</i>)</li> </ol> <p><i>N.B. The signed copy of NIT in all pages shall be uploaded in NIT Folder and all the statutory documents mentioned above shall be uploaded in Technical Bid Folder. It is to be noted that no documents is needed to be sent physically. Bid not accompanied by the aforesaid documents shall not be accepted for evaluation.</i></p>
<b>Financial Bid</b>	Rate shall be quoted in the Financial bid. The bidder shall quote the rate online through Computer only in the space marked for quoting rate in the Bill of Quantities (BOQ). Only downloaded copies of the above documents, digitally signed by the bidder are to be uploaded (Excel file).
<b>Validity of Bid</b>	365 days.
<b>Download of Tender</b>	<ol style="list-style-type: none"> <li>1. <b>Download of Tender</b> Tender to be downloaded only from the e-Tendering portal of Govt. of West Bengal i.e. <a href="https://wbtenders.gov.in">https://wbtenders.gov.in</a> .The tender will be submitted in two bid system i.e. Technical bid &amp; Financial bid only through online.</li> <li>2. <b>Online Bid submission procedure</b> <ol style="list-style-type: none"> <li>i. <b>Registration of Bidders:</b> Agencies/Bidders who are interested in participating e-tenders will have to get enrolled &amp; registered with the Government e-Procurement system. through logging on to <a href="https://wbtenders.gov.in">https://wbtenders.gov.in</a></li> <li>ii. <b>Digital Signature certificate (DSC):</b> Each bidders is required to obtain a class-II or Class-III Digital Signature Certificate (DSC) having Signing and Encryption certificate for submission of tenders from the approved service provider of the National Information's Centre (NIC) on payment of requisite amount or any service provide as may be allowed by the Finance Department, Govt. of West Bengal.</li> <li>iii. <b>Tender Download:</b> The bidders can search &amp; download NIT &amp; Tender Documents electronically from computer once he logs in to the e-Tendering portal <a href="https://wbtenders.gov.in">https://wbtenders.gov.in</a> using the Digital Signature Certificate. This is the only mode of collection of Tender Documents.</li> <li>iv. <b>Submission of Tenders:</b> General process of submission, Tenders are to be submitted through online to the stipulated website in two folders, (one is Technical Bid &amp; the other is Financial Bid) before the prescribed date &amp; time using the Digital Signature Certificate (DSC). The documents are to be uploaded duly digitally signed. The documents will get encrypted (transformed into non readable formats).</li> </ol> </li> </ol>
<b>Award of Contract</b>	The <b>bidder selected</b> after evaluation of financial bid by the tender committee will be given Award of Contract, subject to fulfillment of Terms and Conditions provided in the tender.
<b>Publication of Tender</b>	<ol style="list-style-type: none"> <li>1. E-Procurement Portal Govt. of West Bengal (<a href="https://wbtenders.gov.in">https://wbtenders.gov.in</a>)</li> <li>2. Website of the Milk Union (<a href="http://www.bhagirathimilk.com">www.bhagirathimilk.com</a> )</li> <li>3. Office Notice Board</li> </ol>

## GENERAL TERMS AND CONDITIONS

1. A Non-refundable Tender fees of Rs. 1000.00/- has to be deposited & any conditional or incomplete Tender shall not be accepted.
2. The lowest successful Tender/bidder must commission the work within a period of 10 days from the date of issue and subsequent acceptance of Award of Contract (AOC) & Work Order (WO).
3. The rate quoted must be inclusive of all labour and material required for the Job. The Tender involves scope of supply and service. Any expenditure other than the quoted rate shall not be accepted.
4. No escalation in price / rate will be allowed on any ground and no claim in this regard shall be entertained.
5. EMD of the lowest successful bidder who has been awarded with the Contract shall be converted into Security deposit and shall be released after 12 months successful completion of the Work duly approved by the Competent Authority. EMD of unsuccessful bidders shall be released within 1 month after the AOC has been awarded to the lowest bidder. EMD shall not carry any interest.
6. No mobilization advance shall be given for this contract at any cost. Similarly no bills shall be reimbursed on pro-rata basis.
7. The rate quoted by the Tender must be inclusive of all required materials in adherence to schedule of job as furnished in the Tender.

### **8. Terms of Payment:**

Payment will only be made in NEFT/RTGS after approval from Competent Authority. Three copies of invoices must be submitted for payment .The payment shall be released in two phases:

- 1. 90% payment shall be made within 60 days after successful completion of the job duly certified by the Departmental In-Charge and approved by Competent Authority.**
  - 2. Remaining 10% payment shall be made after 12 months of successful completion of the job. This 10% shall serve as performance guarantee. In case the work is found to be faulty due to negligence or use of inferior quality material by the contractor which is found after release of 90% payment the performance guarantee shall be forfeited and the contractor shall straightaway be blacklisted for 3 years.**
9. Liquidated damage: Liquidated damage of 0.5% per day of the total cost of the Tender awarded to the bidder shall be charged if there is any delay in completion or inception of the job subjected to a maximum of 10% and the cost shall be recovered from the Contractor by deducting from the bills.

10. If the tender has already been blacklisted by any Government/ Government Undertakings/ Co-operative societies, his tender will be rejected. In case information about such black listing comes to the knowledge of the Union after awarding of the tender, the contract will be terminated, liquidated damages levied, apart from taking penal action.
- 11. EMD shall be forfeited if the lowest bidder fails to execute the job after getting Award of Contract or withdraws the bid.**
12. BCMPUL reserves the right to accept or reject any or all tender wholly / partly at any point of time without assigning any reason thereof.
13. Force Majeure: For any delay in job not attributable to the Contractor and the Milk Union shall be termed as Liquidated damage such as war, lockouts, catastrophe or any act of God. No liquidated damage on account of the Contractor shall be deducted for this clause.
14. Successful bidder has to complete the work within 60 days after issuance of the work order.
15. For any disputes between the Milk Union and Contractor the decision of the Milk Union shall be the final and binding.
16. The tender must satisfy himself thoroughly about the spot and the requirement of the Union before submitting his tender.
17. The person signing the tender should be the Proprietor / Partner / Managing Director or any other person duly authorized to sign the tender document. In the latter case, authorization letter should be attached.
18. Lowest Bidder has to execute the Affidavit as per Annexure-I
19. The tender should read every page and understand the implications fully and offer the tender only if he could discharge the obligations set out in the tender document.

**Sd/-**  
Managing Director  
The Bhagirathi Cooperative  
Milk Producers' Union Limited

Copy forwarded to:

1. E-Procurement Portal Govt. of West Bengal <https://wbtenders.gov.in>
2. Official Website of the Milk Union [www.bhagirathimilk.com](http://www.bhagirathimilk.com)

# **ANNEXURE – I**

## **AFFIDAVIT**

**(To be furnished in a Twenty Rupees Non-Judicial Stamp Paper duly certified by Notary Public)**

1. I/We the undersigned solemnly declare that all the statements made in the documents, records etc., attached with this application are true and correct to the best of my/our knowledge.
2. I/We the undersigned do hereby certify that neither my/our firm/company nor any of its constituent partners have abandoned any work/works of similar nature and magnitude in India, in the past.
3. I/We the undersigned do hereby certify that any of the contracts awarded to me/us has not been terminated rescinded, due to breach of contract on my/our part in the past.
4. I/We the undersigned authorize (s) and request any bank / person / firm / corporation / Government Departments to furnish pertinent information deemed necessary and requested by The Bhagirathi Cooperative Milk Producers' Union Ltd. to verify the statement made by me/us or to assess my/our competence and general reputation.
5. I/We the undersigned, understand(s) that further qualifying information / clarifications on the statement made by me / us may be requested by The Bhagirathi Cooperative Milk Producers' Union Ltd and agree(s) to furnish such information/clarification within SEVEN Days from the date of receipt of such request from The Bhagirathi Cooperative Milk Producers' Union Ltd.
6. **I/We agreed to execute a formal Agreement embodying the terms & conditions of the said online tender and the General Terms & Conditions.**

### **Dated Signature of Applicant with Seal:**

To be signed by the officer authorized by the Firm/Company to sign on behalf, the Firm/Company with company's seal)

**Note:** In case of sole proprietary concern, affidavit should be signed only by the sole proprietor.

(Title of the Officer)

(Title of the firm/Company)

(Date)

The above named deponent has understood the contents well and solemnly and sincerely declared and affirmed by the deponent in my presence at.....and signed before me on this day of

..... (Seal).

**(Signature of the Notary Public)**



**PROPOSED ESTIMATE FOR TRUSS FACTORY SHED WITH R.C.C. FOUNDATION ,  
MURSHIDABAD.**

SL. No.	Description of Item	Quantity	Unit	Rate	Amount
1	Earth work in excavation of foundation trenches or drains, in all sorts of soil (including mixed soil but excluding laterite or sandstone) including removing, spreading or stacking the spoils within a lead of 75 m. as directed. The item includes necessary trimming the sides of trenches, levelling, dressing and ramming the bottom, bailing out water as required complete.  (a) Depth of excavation not exceeding 1,500 mm. (Page No.1, Item No.2)  22 X 2.50 X 2.00 X 1.50 = 165.00	165.00	Cum	119.27	19,680.00
2	Earth work in filling in foundation trenches or plinth with good earth, in layers not exceeding 150 mm. including watering and ramming etc. layer by layer complete. (Payment to be made on the basis of measurement of finished quantity of work) (a) With earth obtained from excavation of foundation. (Page No.1, Item No.3) 1/3 X 165.00 = 55.00	55.00	%cum	7,754.00	4,265.00
3	Single brick flat soling of picked jhama bricks including ramming and dressing bed to proper level and filling joints with powdered earth or local sand.  (Page No.14, Item No.1) 22 X 2.50 X 2.00 = 110.00 26.50 X 23.00 = 609.50 125.50 X 0.375 = 47.06	766.56	Sq.M	326.00	2,49,899.00
4	(I) Cement concrete with graded stone ballast (20 mm size excluding shuttering) In ground floor (A) [NALHATI Variety] (a) 1:2:4 proportion 22 X 2.50 X 2.00 X 0.075 = 8.250 26.50 X 23.00 X 0.100 = 60.95	69.200	Cum	4,957.92	3,43,088.00
5	Ordinary Cement concrete ( mix 3:1.5:1 ) with graded stone chips ( 20 mm.down excluding shuttering and reinforcement, if any, in ground floor as per IS 456-2000. a) Nalhati Variety (Page No.26, Item No.10) 22 X 2.50 X 2.00 X 0.450 = 49.500 22 X 0.60 X 0.500 X 1.500 = 9.900 125.50 X 0.25 X 0.500 = 15.688 99.00 X 0.25 X 0.200 = 4.950	80.038	Cum	5,515.08	441,416.00 <del>4,41,372.00</del>
6	Hire and labour charges for shuttering with centreing and necessary staging upto 4 m. using approved stout props and thick hard wood planks of approved thickness with required bracing for concrete slabs, beams, columns, lintels curved or straight including fitting, fixing and striking out after completion of works. (upto roof of ground floor) (Page No.42, Item No.36,a)  22 X 2 ( 2.50+ 2.00 ) X 0.450 = 89.100 22 X 2 ( 0.60+ 0.50 ) X 1.500 = 72.600 2 X 125.50 X 0.500 = 125.50 2 X 99.00 X 0.200 = 39.60	326.80	Sqm.	330.00	1,07,844.00



7	<p>Reinforcement for reinforced concrete work in all sorts of structures including distribution bars, stirrups, binders etc. including supply of rods, initial straightening and removal of loose rust (if necessary), cutting to requisite length, hooking and bending to correct shape, placing in proper position and binding with 16 gauge black annealed wire at every inter-section, complete as per drawing and direction. (Page No.44, Item No.40)</p> <p>(a) For works in foundation, basement and upto roof of (a) Tor steel/Mild steel for ground floor</p> <p>SHYAM/SRMB/JSW/BMASL/SSL/ELECTROSTEEL/JSTL <del>7850</del> <sup>75.409</sup> X <del>7850</del> <sup>75.40</sup> = <del>7538.82</del> <sup>7540</sup> KG</p>				
		75.400	Qntl	6,000.30	4,52,423.00
7	<p>Brick work with 1st class bricks in cement mortar (1:6)</p> <p>a) In foundation and plinth (Page No.15, Item No.8) 2 ( 23.00+ 26.50 ) X 0.25 X 0.6 = 14.850</p>	14.85	cum	4,928.00	73,181.00
	<p>a) In Superstructure 2 ( 23.00+ 26.50 ) X 0.25 X 2.40 = 59.400</p>	59.40	cum	5,151.00	3,05,969.00
8	<p>Plaster (to wall, floor, ceiling etc.) with sand and cement mortar including rounding off or chamfering corners as directed and raking out joints including throating, nosing and drip course, scaffolding/staging where necessary (Ground floor).[Excluding cost of chipping over concrete surface (Page No.189, Item No.1)</p> <p>(i) With 1:6 cement mortar (b) 20 mm thick plaster 2 (23.00+ 26.50 ) X 2.400 = 237.600</p> <p>(c) 15 mm thick plaster 2 (23.00+ 26.50 ) X 3.000 = 297.000</p>	237.60	Sq.m.	163.00	38,729.00
		297.00	Sq.m.	142.00	42,174.00
9	<p>A) Filling in foundation or plinth by silver sand in layers not exceeding 150 mm as directed and consolidating the same by thorough saturation with water, ramming complete including the cost of supply of sand. (payment to be made on measurement of finished quantity) (Page No.2, Item No.4) 26.50 X 23.00 X 0.425 = 259.04</p>	259.04	%cum	59,961.00	1,55,323.00
10	<p>Gate by Hollow Square Bar &amp; Sheet including Priming ,painting, etc. all complete with both side pillars size - 4.25 mtr. X 2.40 mtr (H)</p>	01 no.	L.S.	30,000.00	30,000.00
11	<p>(b) Priming one coat on timber or plastered surface with synthetic oil bound primer of approved quality including smoothening surfaces by sand papering etc.(Page No.200, Item No.1)</p>	534.60	Sq.m.	38.00	20,315.00
12	<p>Applying Acrylic Emulsion Paint of approved make and brand on walls and ceiling including sand papering in intermediate coats including putty (to be done under specific instruction of Superintending Engineer) : (Two coats) i) Standard Quality (Page No.201, Item No.4)</p>	534.60	Sq.m.	62.00	33,145.00



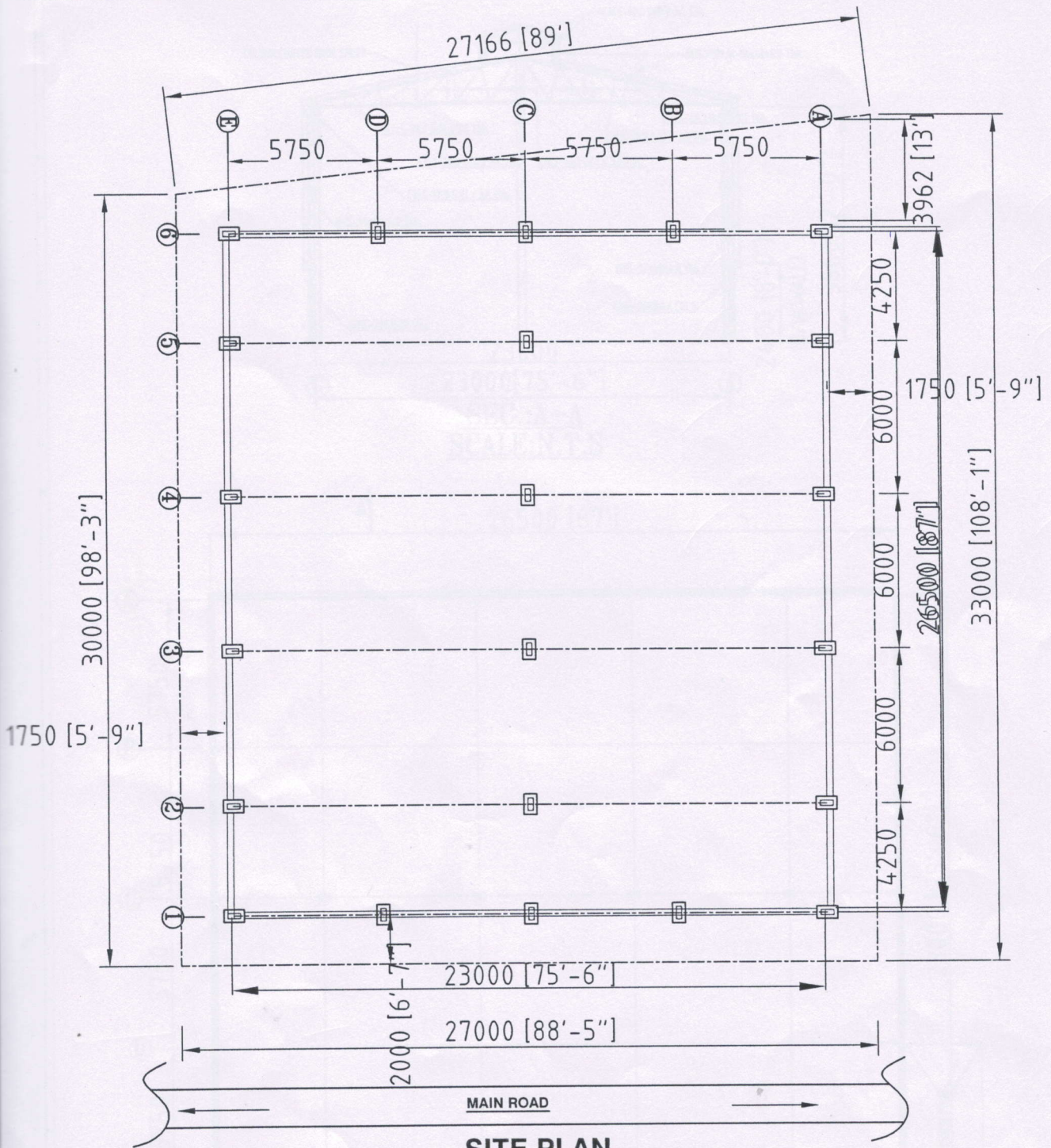
13	<p>M.S. structural works with hollow sections (square or rectangular shape) The rate includes the cost of all M.S. Hollow section, all consumables such as Payment to be made on the basis of calculated weight of structural members b) Span beyond 20 Mtr and up to 30.00 Mtr (Page No.101, Item No.2A)</p> <p><b>STRUCTURE :</b> Dimension Of Shed :</p> <p>a) Total Length - 26.5M b) Span (Width) - 23.0 M c) Eaves Height - 3.66 M d) Eaves Bay Spacing - 4 Bays @6.00M C/C &amp; 2 Bays @4.25M C/C e) Gable Column Spacing - 5Nos @5.75M C/C</p> <p><b>Structure would be comprised of the following :</b> Grade Of Steel : 1) RHS/SHS Sections : YST 310 2) Circular Tubular Sections - YST 240 /YST 310 3) Rolled Sections Conforms To : IS 808-1957 &amp; IS 800-1962 Trusses made from CHS / RHS/ SHS Sections Monitor Truss System ( Trusses + Purlins) RHS Purlins RHS Side Runners Braced Columns From Rolled Sections Tubular Bottom Runners Tubular Column Ties Rafters &amp; Tie Bracings MS Nuts &amp; Bolts High Tensile HD Bolts ( Grade 8.8)</p> <p>1. Weight of Column (MC-200) - 3650 Kg. 2. Weight of Column Shoe (MB-300) – 310 Kg. 3. Weight of Column Tie (CHS-88.9 o/d) – 650 Kg. 4. Weight of Truss (CHS-88.9,48.,60.3 o/d) – 4280 Kg. 5. Weight of Purlin (RHS-96x48x4 Thk.) – 8820 Kg. 6. Weight of Monitor – 310 Kg. 7. Weight of Col &amp; RafterBracing – 1350 Kg. 8. Weight of Bottom Runner – 450 Kg. 9. Weight of Gable runner – 1420 Kg. 10. Weight of Batten Pl.(8 Thk.) – 2520 Kg. 11. Weight of False Frame – 310 Kg. 12. Weight of Cantilever- 780 Kg.</p> <table border="1" data-bbox="231 1377 766 1579"> <tr> <td>Total weight of Structure :</td> <td>19,470 Kg.</td> </tr> <tr> <td>Add weight of Joint Plates @7% :</td> <td>1363 Kg.</td> </tr> <tr> <td>Add weight of Nuts-Bolts @6% :</td> <td>1168 Kg.</td> </tr> <tr> <td><b>Total Weight :</b></td> <td><b>22,001 Kg.</b></td> </tr> <tr> <td>(Note :Burning Loss 4% :</td> <td>880 Kg.)</td> </tr> <tr> <td><b>Total =</b></td> <td><b>22,881 Kg.</b></td> </tr> <tr> <td>Round off =</td> <td><b>22.88 M.T.</b></td> </tr> </table>	Total weight of Structure :	19,470 Kg.	Add weight of Joint Plates @7% :	1363 Kg.	Add weight of Nuts-Bolts @6% :	1168 Kg.	<b>Total Weight :</b>	<b>22,001 Kg.</b>	(Note :Burning Loss 4% :	880 Kg.)	<b>Total =</b>	<b>22,881 Kg.</b>	Round off =	<b>22.88 M.T.</b>	22.88	M.T.	77823.00	1780590.00 17,58,282.00
Total weight of Structure :	19,470 Kg.																		
Add weight of Joint Plates @7% :	1363 Kg.																		
Add weight of Nuts-Bolts @6% :	1168 Kg.																		
<b>Total Weight :</b>	<b>22,001 Kg.</b>																		
(Note :Burning Loss 4% :	880 Kg.)																		
<b>Total =</b>	<b>22,881 Kg.</b>																		
Round off =	<b>22.88 M.T.</b>																		
14	<p>Galvanised corrugated iron sheet work (excluding the supporting frame work) fitted and fixed with 10 mm. dia J or L hook-bolts, limpet and bitumen washers and putty complete with 150 mm. end lap and one corrugation minimum side lap.(Payment to be made on area of finished work)(GCI sheet to be supplied by contractor) (i) In Roof:- a) With 0.6 mm thick sheet (Page No.82, Item No.14) Sheets would Either TATA BlueScope Or JSW Make Or Equivalent. TCT</p> <table border="1" data-bbox="231 1780 917 1892"> <tr> <td>Roof</td> <td>2 X 12.15 X 27.000 =</td> <td>656.10</td> </tr> <tr> <td>Wall</td> <td>2 (23.00+ 26.50 ) X 1.200 =</td> <td>118.80</td> </tr> <tr> <td>Triangular Portion</td> <td>2 X 1/2 X 23.00 X 3.00 =</td> <td>69.00</td> </tr> <tr> <td>Canopy</td> <td>3 X 4.30 X 1.00 =</td> <td>14.19</td> </tr> </table>	Roof	2 X 12.15 X 27.000 =	656.10	Wall	2 (23.00+ 26.50 ) X 1.200 =	118.80	Triangular Portion	2 X 1/2 X 23.00 X 3.00 =	69.00	Canopy	3 X 4.30 X 1.00 =	14.19	858.09	Sq.m.	619.00	5,31,158.00		
Roof	2 X 12.15 X 27.000 =	656.10																	
Wall	2 (23.00+ 26.50 ) X 1.200 =	118.80																	
Triangular Portion	2 X 1/2 X 23.00 X 3.00 =	69.00																	
Canopy	3 X 4.30 X 1.00 =	14.19																	
15	<p>Galvanised iron sheet ridging fitted with necessary bolts, screws, washers etc (B) 450 mm lapping each way (a) With 0.60 mm sheet (Page No.81, Item No.10)</p>	33.00	Metre	469.00	15,477.00														
16	<p>Galvanised iron sheets valley gutter with perimeter not less than 750 mm with (Page No.82, Item No.12)</p>	55.00	Metre	543.00	29,865.00														



17	IS:13592-1992 with all necessary clamps nails, including making holes in A) UPVC Pipes: (Page No.212, Item No.21) 10.00 X 9.75 = 97.50	97.50	Metre	251.00	24,473.00
	d) Shoe (ii) 110 mm. Dia. (Page No.212, Item No.21) 10 Nos.	10.00	Each	111.00	1,110.00
18	Labour for assembling, hoisting, placing, fitting & fixing tubular roof trusses. (e) Above 12 m to 15 m span (Page No.103, Item No.9) 2 X 7 = 14	14.00	Each	2,925.00	40,950.00
19	(a) Priming one coat on steel or other metal surface with synthetic oil bound primer of approved quality including smoothening surfaces by sand papering etc. (Page No.200, Item No.1)	609.50	Sq.m.	29.00	17,676.00
20	(A) Painting with best quality synthetic enamel paint of approved make and brand including smoothening surface by sand papering etc. including using of approved putty etc. on the surface, if necessary : (b) On steel or other metal surface : (Page No.200, Item No.2) With super gloss (hi-gloss) - (ii) Two coats (white in shade)	609.50	Sq.m.	78.00	47,541.00
<b>Total =</b>					<b>47,83,939.00</b>
Add 18% G.S.T =					8,61,109.00
					<b>56,45,048.00</b>
Add 1% Cess =					56,450.00
<b>GRAND TOTAL=</b>					<b>57,01,498.00</b>

Total = Rs. 4806291.00  
 Add 18% G.S.T = Rs. 865132.00  
 Total = Rs. 5671423.00  
 Add 1% Cess = Rs. 56714.00  
 Grand Total = Rs. 5728137.00





**SITE PLAN**

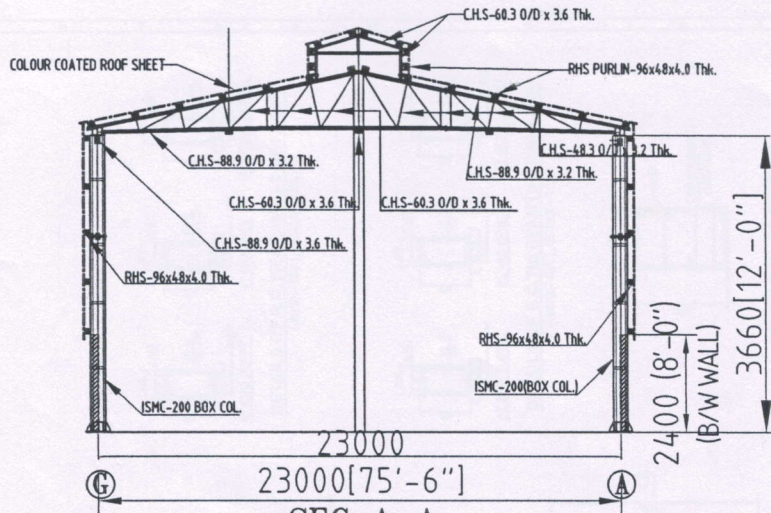
**BUILD UP AREA = 609.50 SQ.M. = 6558 SQ.FT.**

**PLOT AREA = 849.61 SQ.M. = 9145.14 SQ.FT.**

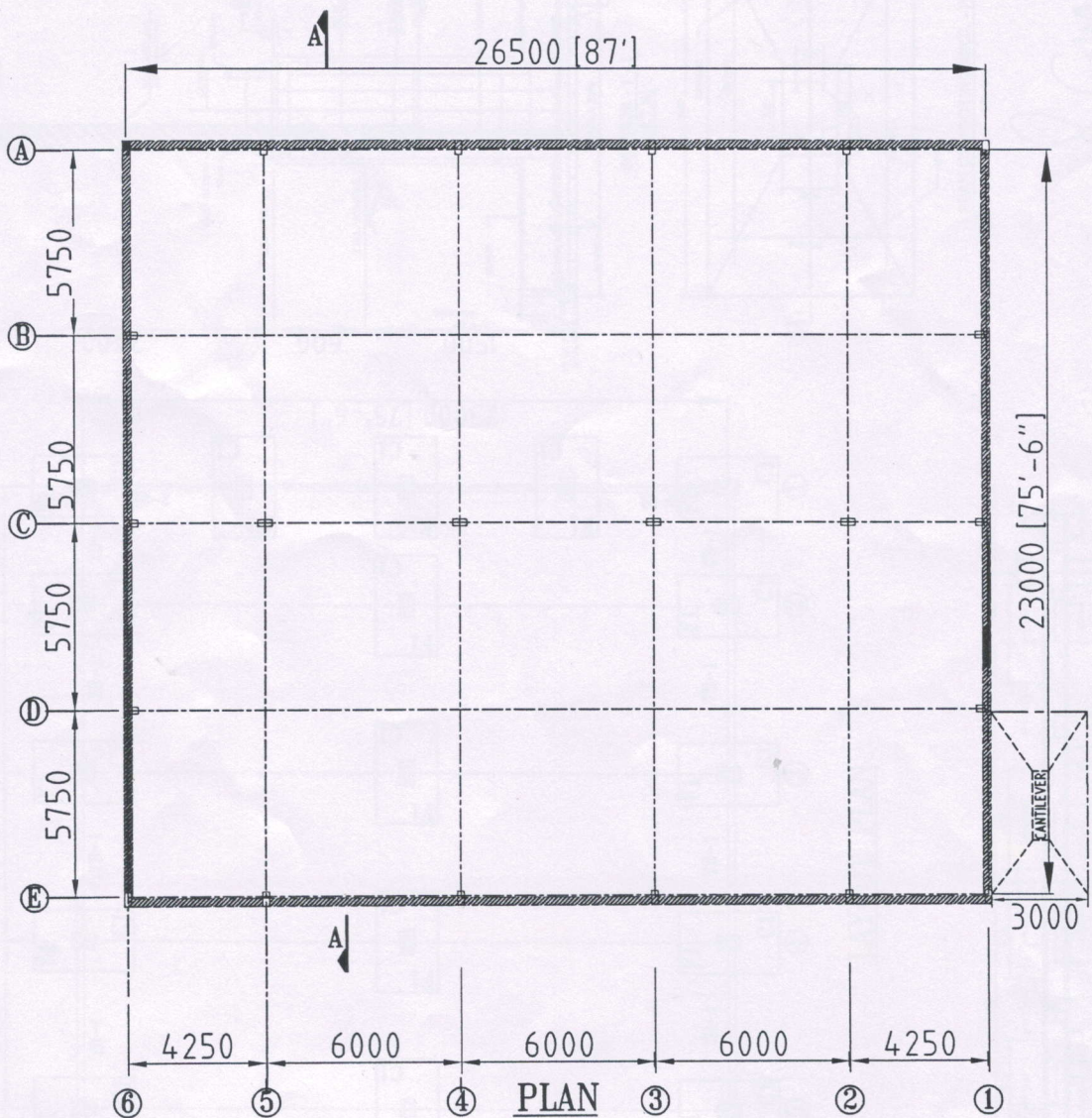
DISTRICT MAGISTRATE, MURSHIDABAD  
(PLANNING SECTION)  
COLLECTORATE BUILDING, BERRHAMPORE  
Murshidabad - 742101

PROJECT		TRUSS FACTORY SHED, KANDI, M.S.D.	
DRN	NAME	SIGN	TITLE: SITE PLAN OF TRUSS FACTORY SHED KANDI, MURSHIDABAD.
CHKD			
REVED.			
APPVD.			
DATE	10/04/23		
SCALE		SIZE	REV
1:100.		A2	RO





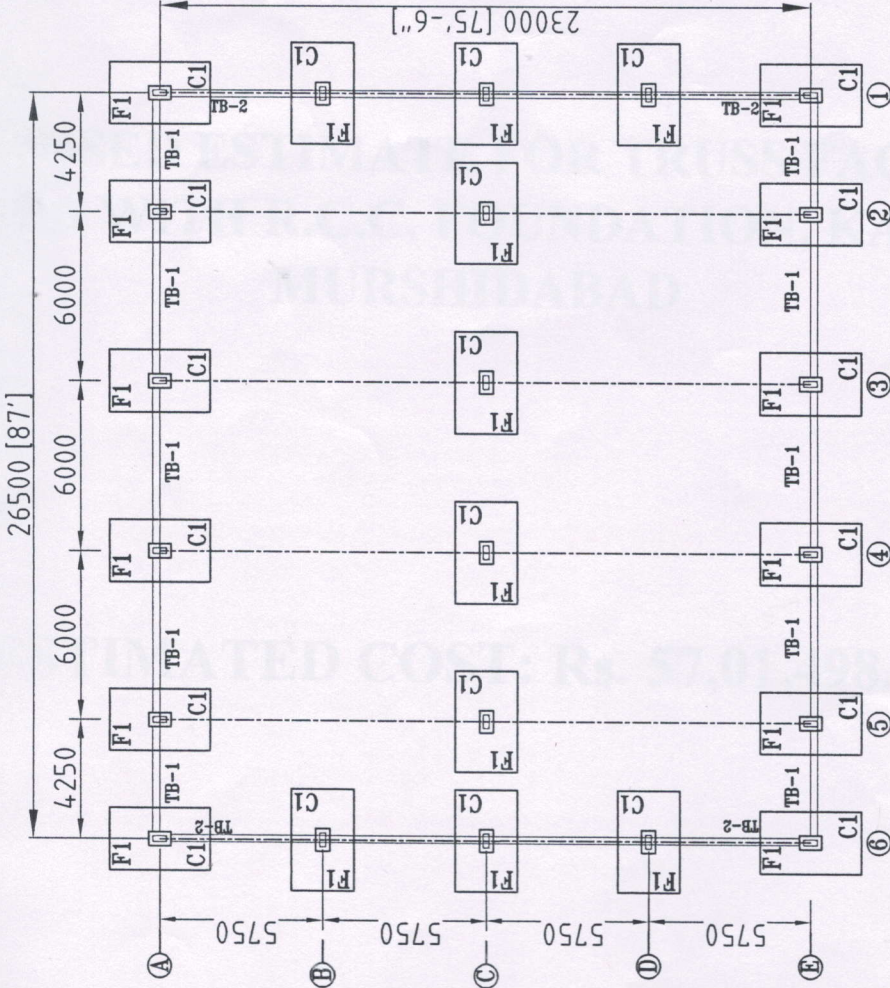
SEC.:A-A  
SCALE:N.T.S



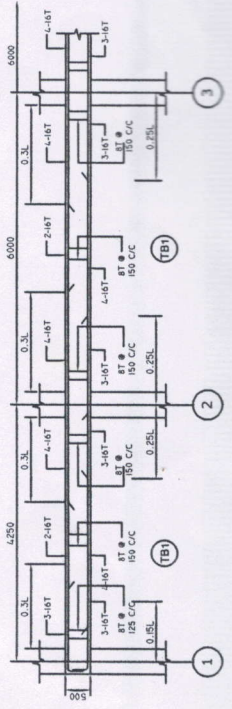
PLAN

DISTRICT MAGISTRATE, MURSHIDABAD (PLANNING SECTION) COLLECTORATE BUILDING, BERMAMPUR MURSHIDABAD- 742101					
PROJECT		TRUSS FACTORY SHED, KANDI, MS.D.			
DRN	NAME	SIGN	TITLE:		
CHKD			PLAN & ELEVATION DRAWING OF		
REVCD.			TRUSS FACTORY SHED, KANDI,		
APPVD.			MURSHIDABAD, WEST BENGAL		
DATE	10/14/23				
			SCALE	SIZE	REV.
			1:100,50,25,	A2	R0

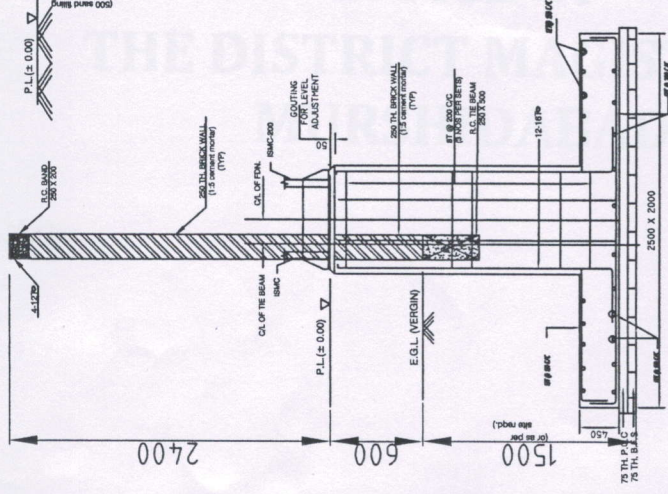




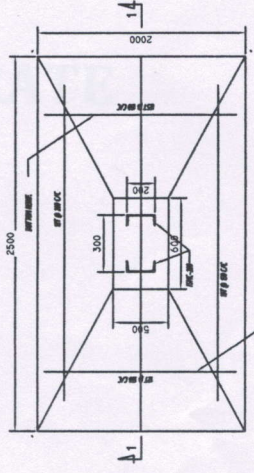
LAYOUT PLAN



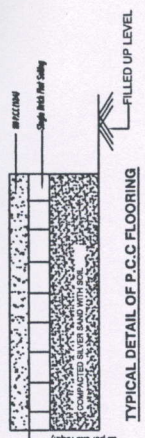
LONGITUDINAL SECTION OF TIE BEAM MKD - TB1



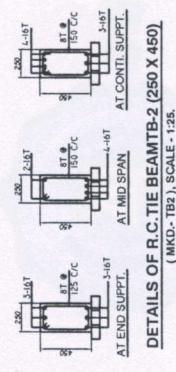
SECTION - 1 - 1 (N.T.S)



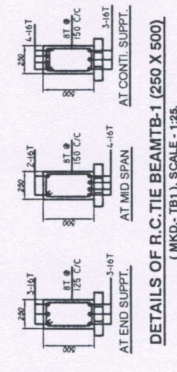
PLAN OF FOOTING MKD - F1



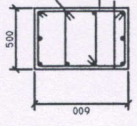
TYPICAL DETAIL OF P.C.C FLOORING



DETAILS OF R.C.TIE BEAM TB-2 (250 X 450) (MKD - TB2), SCALE - 1:25.



DETAILS OF R.C.TIE BEAM TB-1 (250 X 500) (MKD - TB1), SCALE - 1:25.



CROSS SEC. OF PEDESTAL (SHOWING REIN.) (FOR COL. MKD - C1/C2)

DISTRICT MAGISTRATE, MURSHIDABAD  
(PLANNING SECTION)  
COLLECTORATE BUILDING, BISHNUPUR  
Murshidabad - 74101

PROJECT	TRUSS FACTORY SHED, KANDI, M.S.D.
NAME	
SKETCH	
TITLE	FOUNDATION LAYOUT PLAN OF TRUSS FACTORY SHED WITH R.C.C. FOUNDATION, KANDI, MURSHIDABAD.
DATE	10/04/23
SCALE	SIZE (REV.)
1:100	A2
1:100	A3
1:100	A4
1:100	A5
1:100	A6
1:100	A7
1:100	A8
1:100	A9
1:100	A10
1:100	A11
1:100	A12
1:100	A13
1:100	A14
1:100	A15
1:100	A16
1:100	A17
1:100	A18
1:100	A19
1:100	A20
1:100	A21
1:100	A22
1:100	A23
1:100	A24
1:100	A25
1:100	A26
1:100	A27
1:100	A28
1:100	A29
1:100	A30
1:100	A31
1:100	A32
1:100	A33
1:100	A34
1:100	A35
1:100	A36
1:100	A37
1:100	A38
1:100	A39
1:100	A40
1:100	A41
1:100	A42
1:100	A43
1:100	A44
1:100	A45
1:100	A46
1:100	A47
1:100	A48
1:100	A49
1:100	A50
1:100	A51
1:100	A52
1:100	A53
1:100	A54
1:100	A55
1:100	A56
1:100	A57
1:100	A58
1:100	A59
1:100	A60
1:100	A61
1:100	A62
1:100	A63
1:100	A64
1:100	A65
1:100	A66
1:100	A67
1:100	A68
1:100	A69
1:100	A70
1:100	A71
1:100	A72
1:100	A73
1:100	A74
1:100	A75
1:100	A76
1:100	A77
1:100	A78
1:100	A79
1:100	A80
1:100	A81
1:100	A82
1:100	A83
1:100	A84
1:100	A85
1:100	A86
1:100	A87
1:100	A88
1:100	A89
1:100	A90
1:100	A91
1:100	A92
1:100	A93
1:100	A94
1:100	A95
1:100	A96
1:100	A97
1:100	A98
1:100	A99
1:100	A100